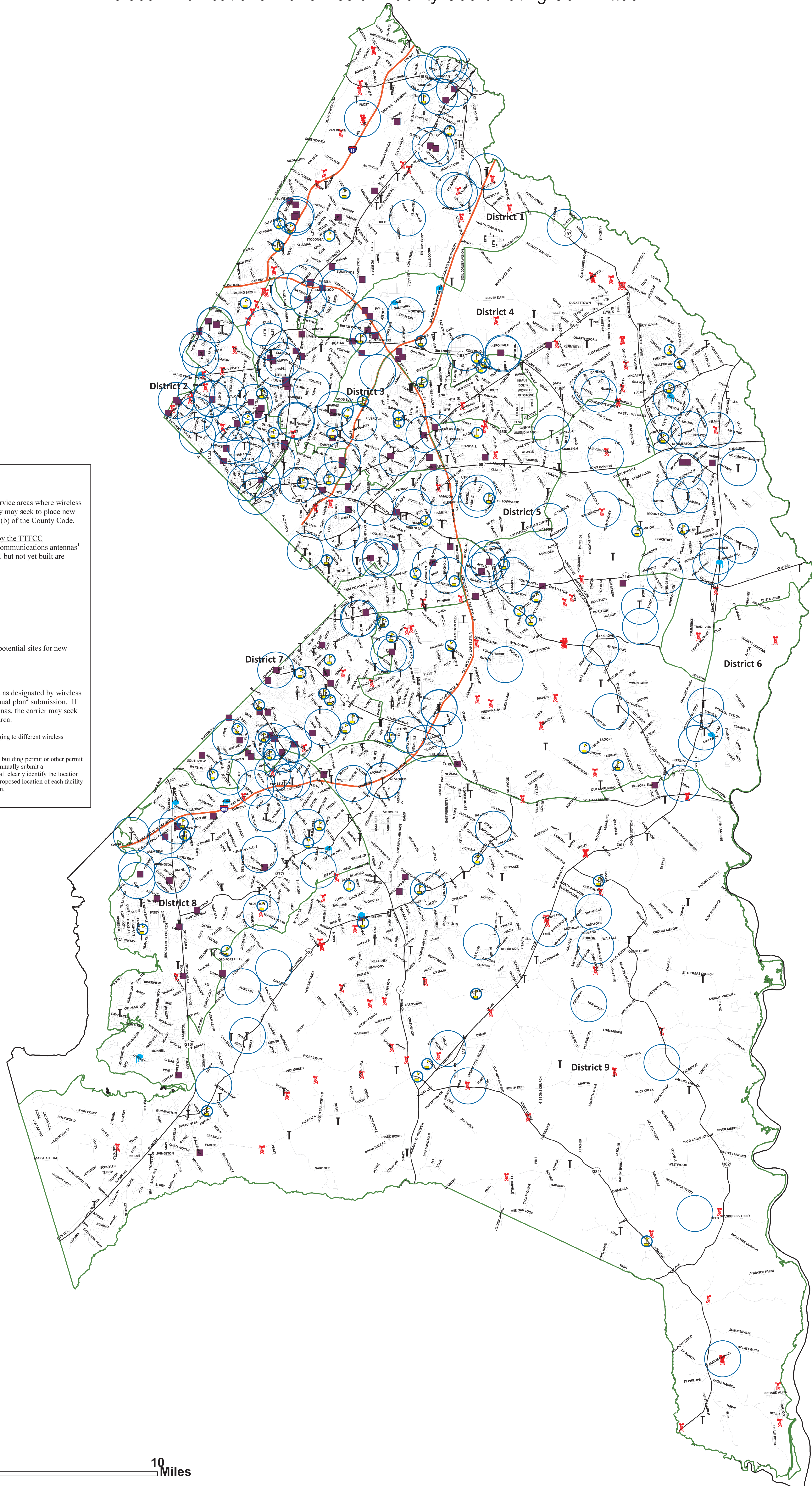


Telecommunications Transmission Facilities Master Plan 2012-2013

Telecommunications Transmission Facility Coordinating Committee



Legend

This Master Plan represents a compilation of potential service areas where wireless telecommunications service providers have indicated they may seek to place new antennas within the next two years pursuant to § 5A-155 (b) of the County Code.

Existing locations and support structure types approved by the TTFCC
Locations and type support where there are existing telecommunications antennas¹ or proposed antennas previously approved by the TTFCC but not yet built are shown below:

- Water Tower
- Building
- Monopole
- Tower
- High school and middle school locations (all potential sites for new monopoles)

Target Service Area for New Antennas

Target area for new telecommunications antennas as designated by wireless telecommunications service providers in their annual plan² submission. If there is no existing support structure for the antennas, the carrier may seek construction of a new tower or monopole in this area.

¹ Some existing structures may have multiple sets of antennas belonging to different wireless telecommunications service providers.

² Pursuant to § 5A-155 (b) of the County Code, every applicant for a building permit or other permit for the erection of a telecommunications transmission facility shall annually submit a telecommunications transmission facility location plan. The plan shall clearly identify the location of every existing telecommunications transmission facility and the proposed location of each facility to be constructed or located in accordance with the permit application.



0 2.5 5 10 Miles