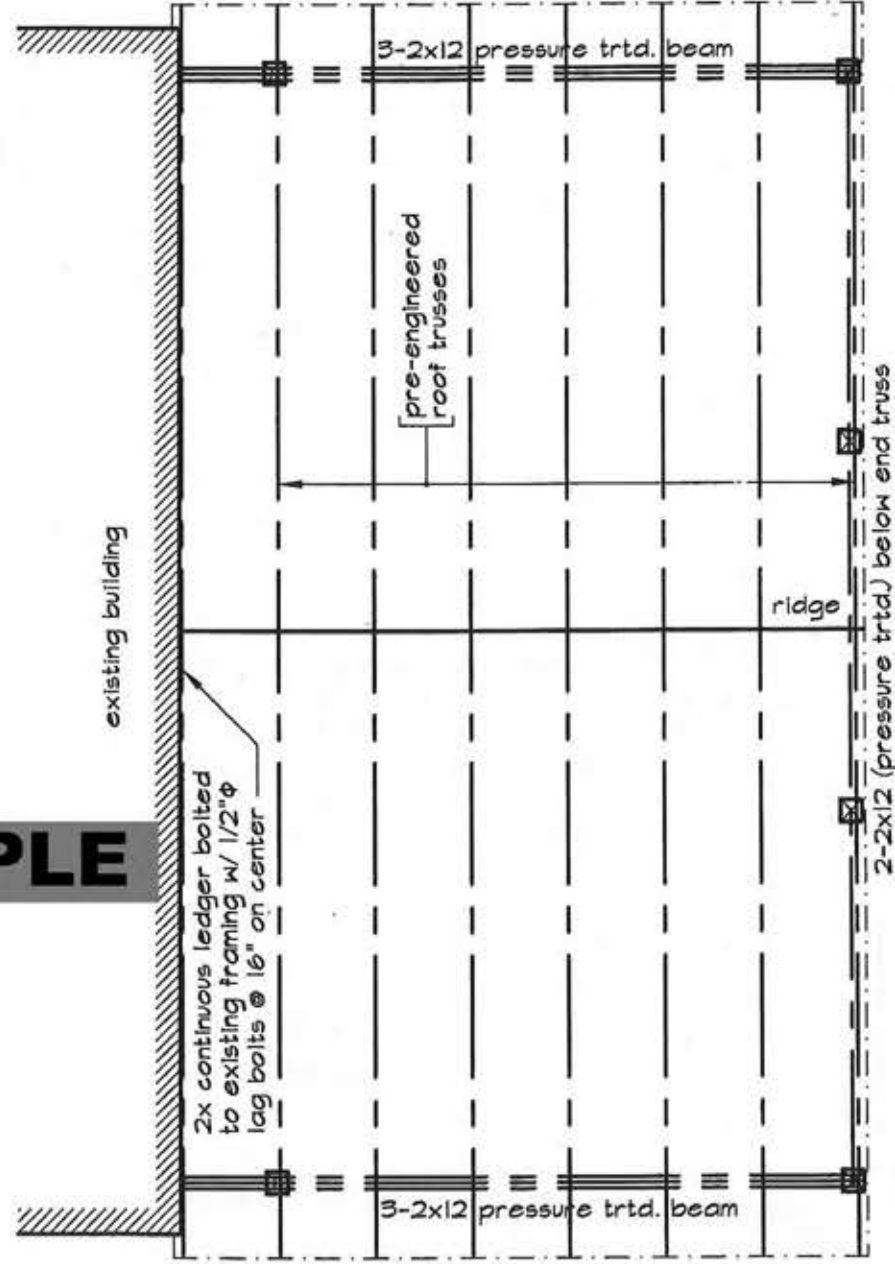


FOUNDATION PLAN

Foundation Notes

- 1.) soil bearing capacity is assumed at 2000 psf minimum.
- 2.) footings shall bear on undisturbed soil at a minimum depth of 30-inches below finish grade.
- 3.) minimum compressive strength of concrete shall be 2500 psi.

SAMPLE



ROOF FRAMING PLAN

WARNING AND DISCLAIMER

This drawing is intended only to be illustrative of the minimum requirements of applicable County ordinances. It is not a permit for construction in Prince George's County, Maryland. PRINCE GEORGE'S COUNTY, MARYLAND DOES NOT WARRANT OR GUARANTEE IN ANY MANNER OR TO ANY EXTENT THE SUFFICIENCY OF THIS DRAWING. Persons to whom this drawing is distributed should not rely on it as an acceptable plan or blue print for any structure. PRINCE GEORGE'S COUNTY, MARYLAND DISCLAIMS ANY AND ALL LIABILITY FOR DAMAGES OR INJURIES, DIRECT OR CONSEQUENTIAL, ARISING OUT OF THE USE OF THIS DRAWING.

Drawing No.

D-001

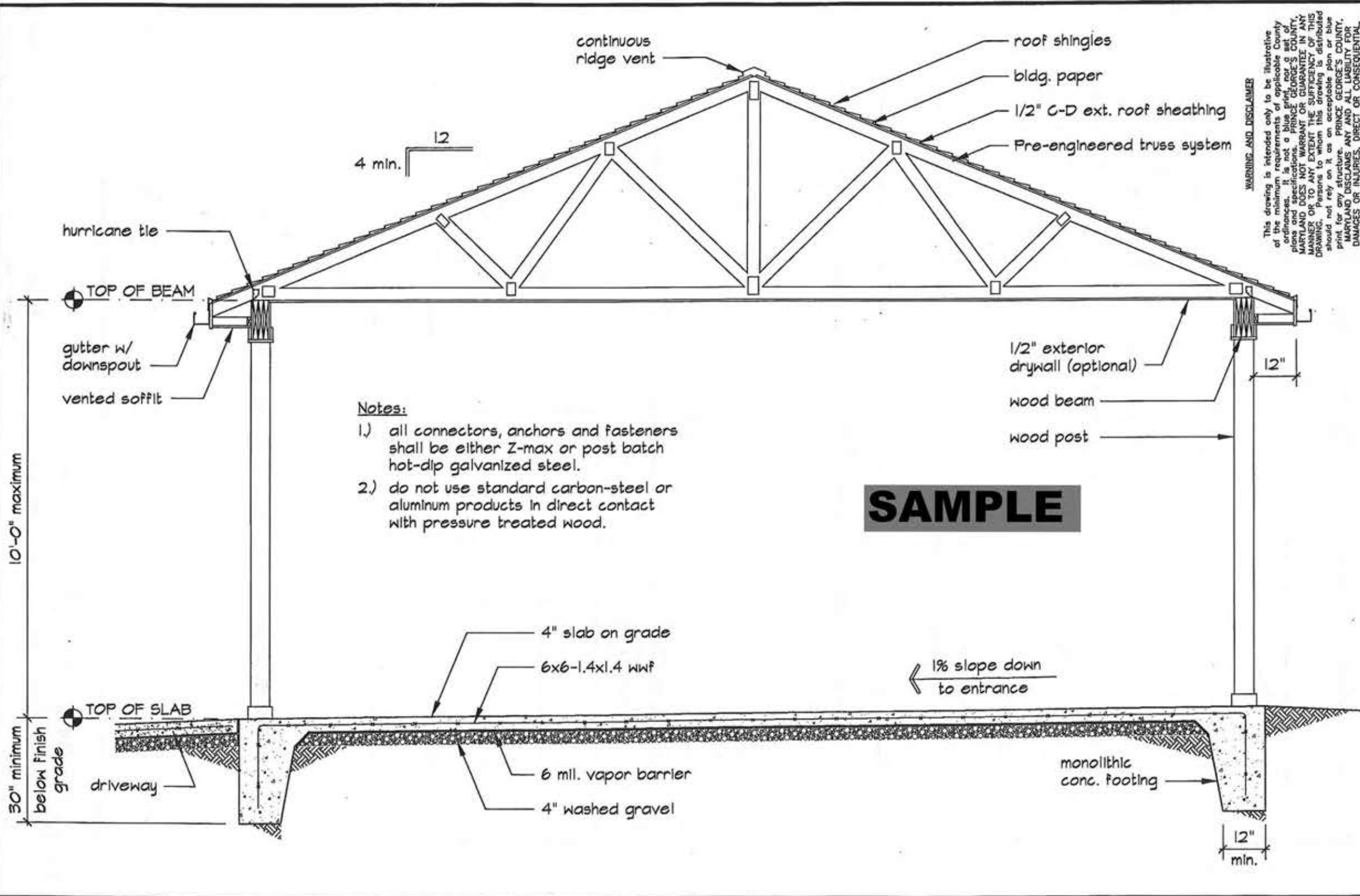
Sheet 1 of 4



CARPORT FOUNDATION & ROOF FRAMING PLANS



Prince George's County Government
Dept. of Permitting, Inspections and Enforcement



4 min. 12

10'-0" maximum

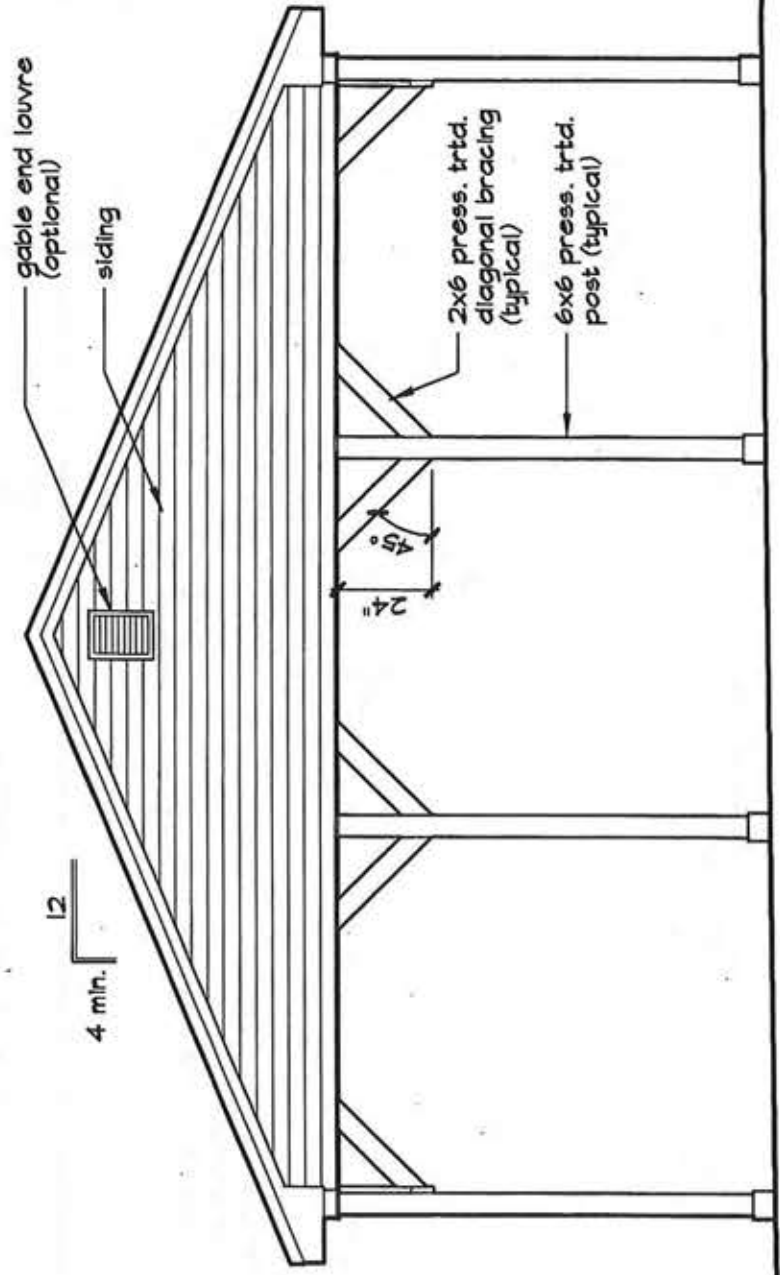
30" minimum below finish grade

- Notes:**
- 1.) all connectors, anchors and fasteners shall be either Z-max or post batch hot-dip galvanized steel.
 - 2.) do not use standard carbon-steel or aluminum products in direct contact with pressure treated wood.

SAMPLE

1% slope down to entrance

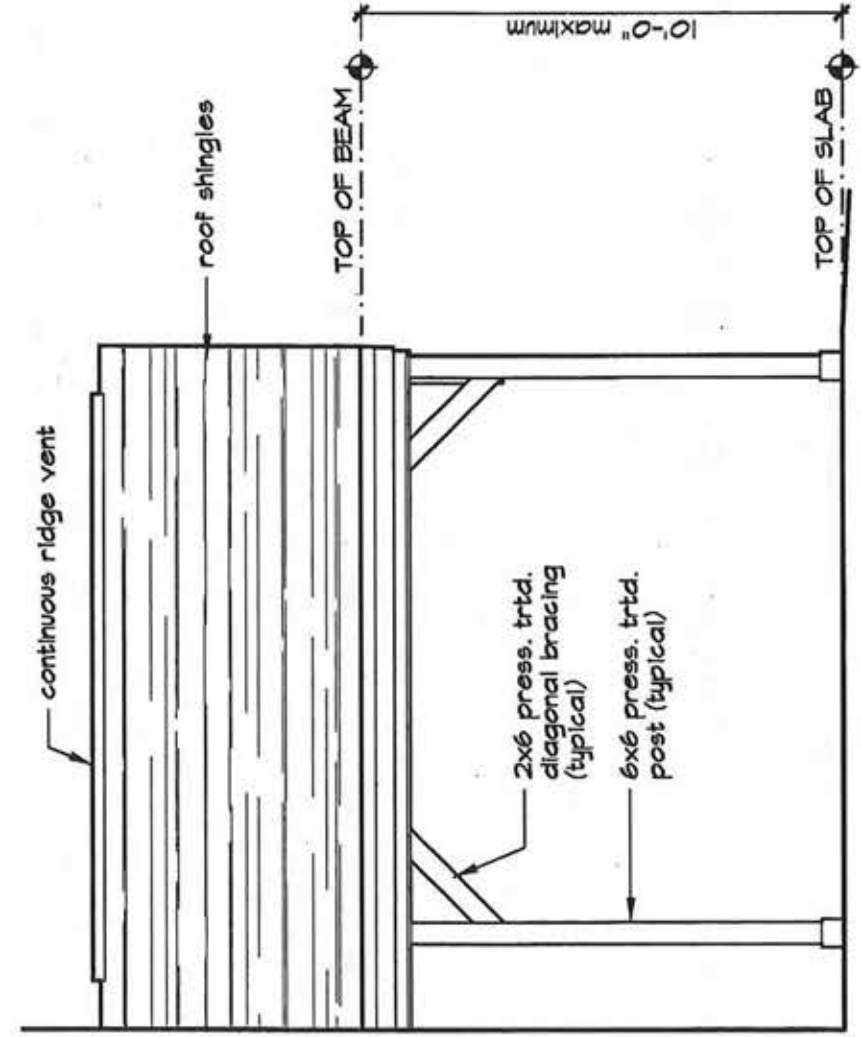
WARNING AND DISCLAIMER
 This drawing is intended only to be illustrative of the minimum requirements of applicable County ordinances. It is not a blue print nor a set of plans and does not constitute a contract. PRINCE GEORGE'S COUNTY, MARYLAND DOES NOT WARRANT OR GUARANTEE IN ANY MANNER OR TO ANY EXTENT THE SUFFICIENCY OF THIS DRAWING. Persons to whom this drawing is distributed should not rely on it as an acceptable plan or blue print for any structure. PRINCE GEORGE'S COUNTY, MARYLAND DISCLAIMS ANY AND ALL LIABILITY FOR DAMAGES OR INJURIES, DIRECT OR CONSEQUENTIAL, ARISING OUT OF THE USE OF THIS DRAWING.



SIDE ELEVATION

Note:

- 1) wall sheathing shall be 1/2" cd-ext plywood fastened w/ 8d nails @ 6" on center at edges and 12" on center @ intermediate supports.

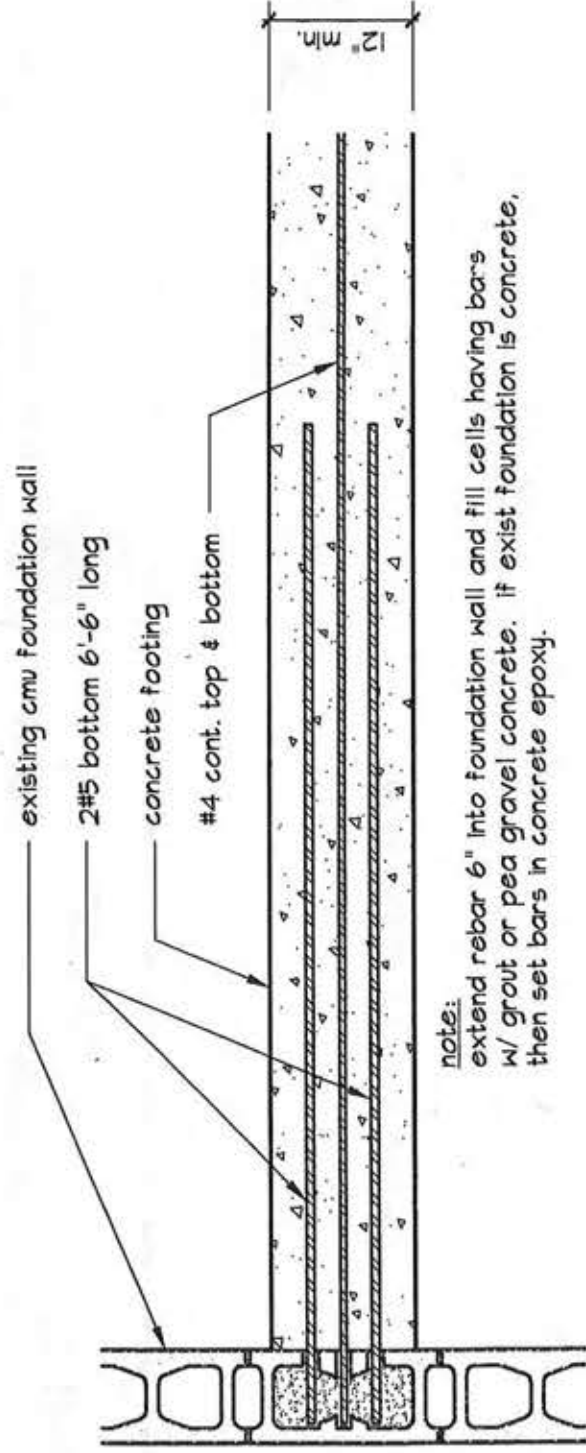


FRONT & REAR ELEVATION

SAMPLE

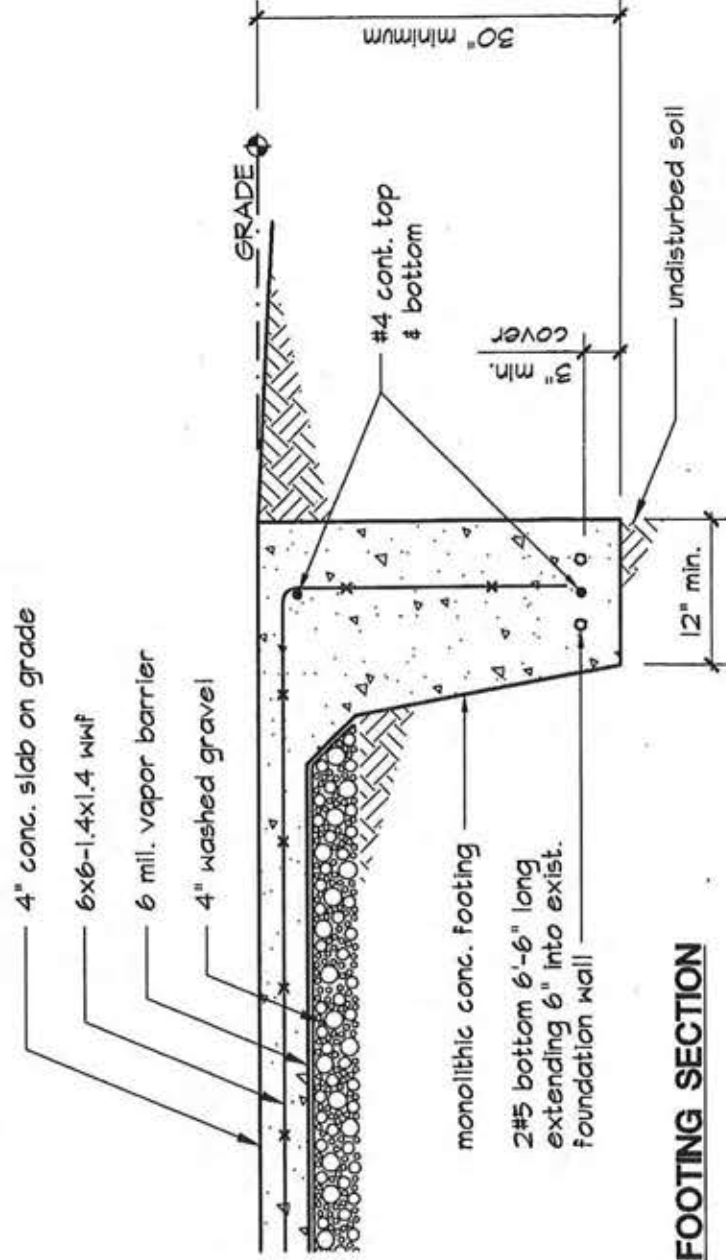
WARNING AND DISCLAIMER
 This drawing is intended only to be illustrative of the minimum requirements of applicable County ordinances. It is not a blue print, nor a set of plans and specifications. PRINCE GEORGE'S COUNTY, MARYLAND DOES NOT WARRANT OR GUARANTEE IN ANY MANNER OR TO ANY EXTENT THE SUFFICIENCY OF THIS DRAWING. Persons to whom this drawing is distributed should not rely on it as an acceptable plan or blue print for any structure. PRINCE GEORGE'S COUNTY, MARYLAND DISCLAIMS ANY AND ALL LIABILITY FOR DAMAGES OR INJURIES, DIRECT OR CONSEQUENTIAL, ARISING OUT OF THE USE OF THIS DRAWING.



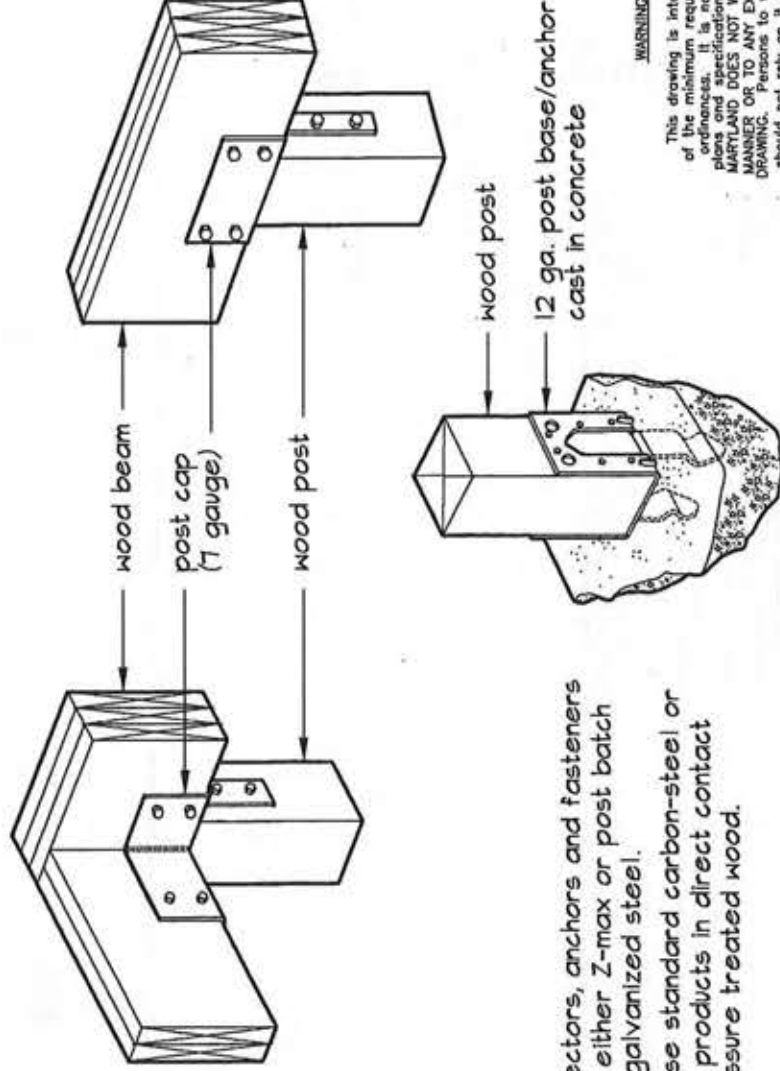


note:
 extend rebar 6" into foundation wall and fill cells having bars w/ grout or pea gravel concrete. if exist foundation is concrete, then set bars in concrete epoxy.

PLAN VIEW - FOOTING CONNECTION @ EXISTING FOUNDATION



FOOTING SECTION



- Notes:
- 1.) all connectors, anchors and fasteners shall be either Z-max or post batch hot-dip galvanized steel.
 - 2.) do not use standard carbon-steel or aluminum products in direct contact with pressure treated wood.

SAMPLE

WARNING AND DISCLAIMER
 This drawing is intended only to be illustrative of the minimum requirements of applicable County ordinances. It is not a blue print nor a set of plans and specifications. PRINCE GEORGE'S COUNTY, MARYLAND DOES NOT WARRANT OR GUARANTEE IN ANY MANNER OR TO ANY EXTENT THE SUFFICIENCY OF THIS DRAWING. Persons to whom this drawing is distributed should not rely on it as an acceptable plan or blue print for any structure. PRINCE GEORGE'S COUNTY, MARYLAND DISCLAIMS ANY AND ALL LIABILITY FOR DAMAGES OR INJURIES, DIRECT OR CONSEQUENTIAL, ARISING OUT OF THE USE OF THIS DRAWING.

Drawing No.

D-004

Sheet 4 of 4



CARPORT DETAILS & CONNECTIONS



Prince George's County Government
 Dept. of Permitting, Inspections and Enforcement