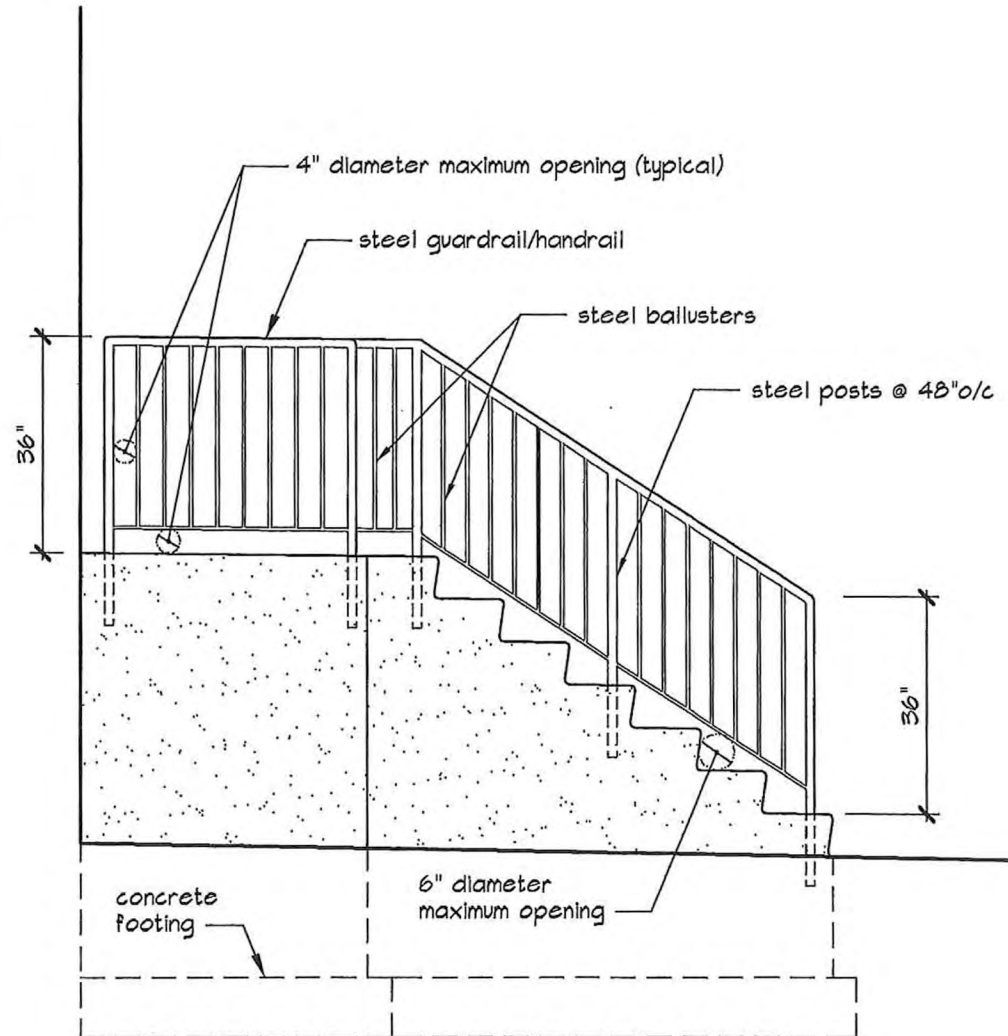


**STAIR & LANDING FLOOR PLANS**

SCALE: 1/4"=1'-0"



**Note:**  
Cast sleeve inserts for guardrails into concrete; set rails w/ epoxy.

**STAIR & LANDING SIDE ELEVATION**

SCALE: 3/8"=1'-0"

**WARNING AND DISCLAIMERS**

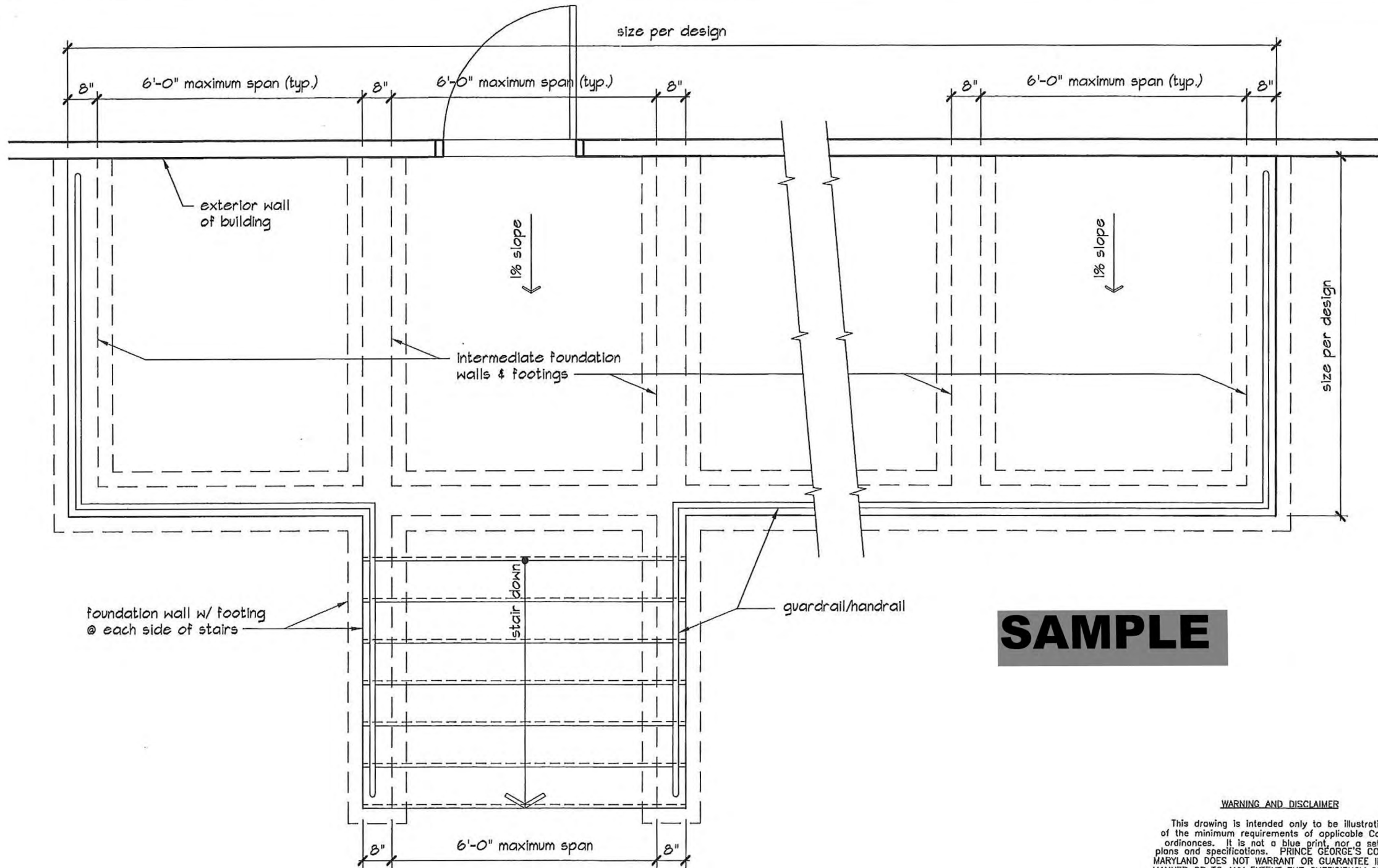
This drawing is intended only to be illustrative of the minimum requirements of applicable County ordinances. It is not a blue print, nor a set of plans and specifications. PRINCE GEORGE'S COUNTY, MARYLAND DOES NOT WARRANT OR GUARANTEE IN ANY MANNER OR TO ANY EXTENT THE SUFFICIENCY OF THIS DRAWING. Persons to whom this drawing is distributed should not rely on it as an acceptable plan or blue print for any structure. PRINCE GEORGE'S COUNTY, MARYLAND DISCLAIMS ANY AND ALL LIABILITY FOR DAMAGES OR INJURIES, DIRECT OR CONSEQUENTIAL, ARISING OUT OF THE USE OF THIS DRAWING.

**EXTERIOR STAIRWAY  
FLOOR PLANS &  
SIDE ELEVATION**

Drawing No.

**D-008**

Sheet 1 of 4



**EXPANDED STAIR & LANDING FLOOR PLAN**

SCALE: 3/8"=1'-0"

**WARNING AND DISCLAIMER**

This drawing is intended only to be illustrative of the minimum requirements of applicable County ordinances. It is not a blue print, nor a set of plans and specifications. PRINCE GEORGE'S COUNTY, MARYLAND DOES NOT WARRANT OR GUARANTEE IN ANY MANNER OR TO ANY EXTENT THE SUFFICIENCY OF THIS DRAWING. Persons to whom this drawing is distributed should not rely on it as an acceptable plan or blue print for any structure. PRINCE GEORGE'S COUNTY, MARYLAND DISCLAIMS ANY AND ALL LIABILITY FOR DAMAGES OR INJURIES, DIRECT OR CONSEQUENTIAL, ARISING OUT OF THE USE OF THIS DRAWING.



Prince George's County Government  
Dept. of Permitting, Inspections and Enforcement



**EXTERIOR STAIRWAY  
FLOOR PLAN  
OPTIONAL EXPANSION**

Drawing No.

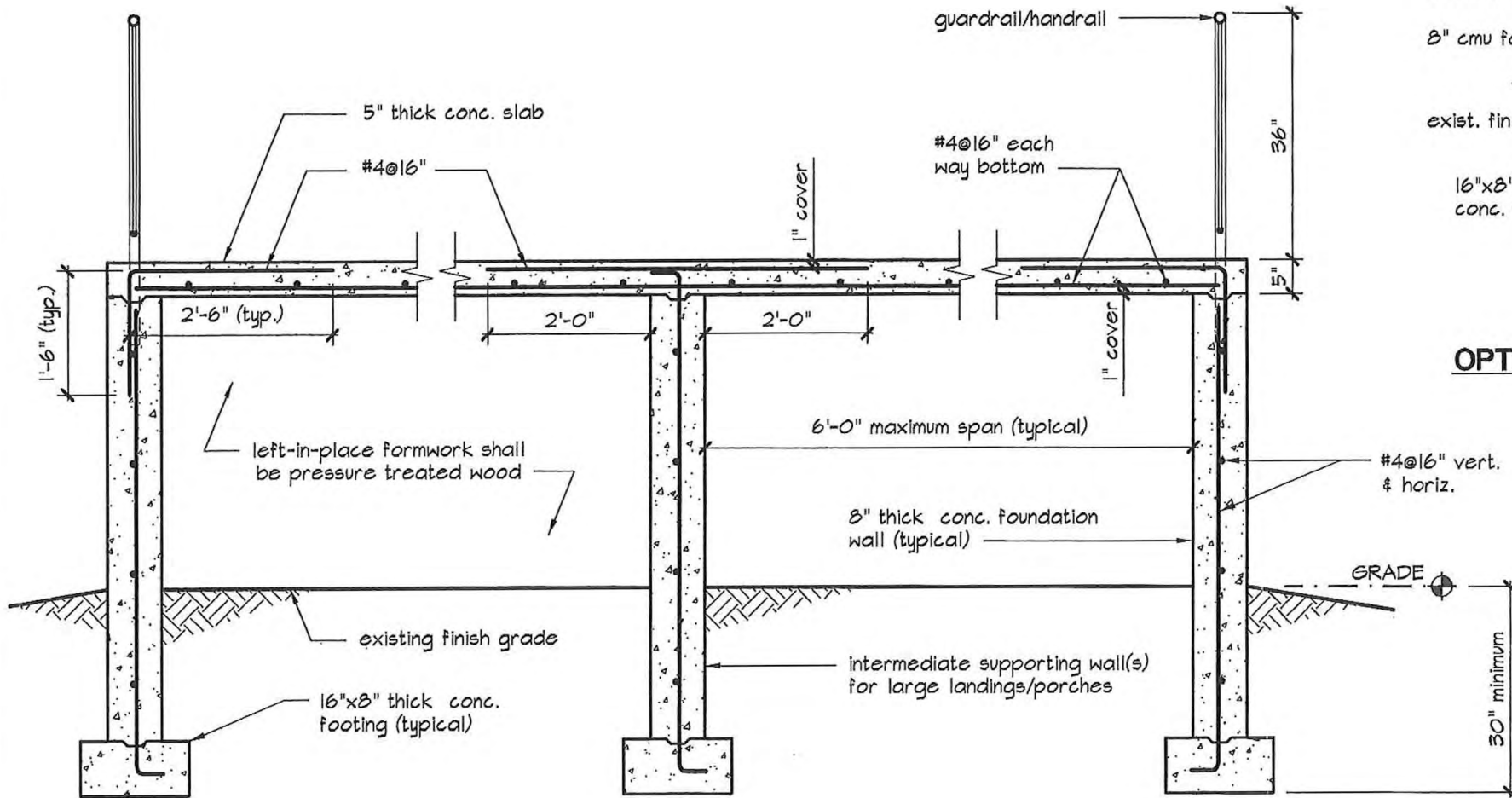
**D-008a**

Sheet 2 Of 4

**Notes:**

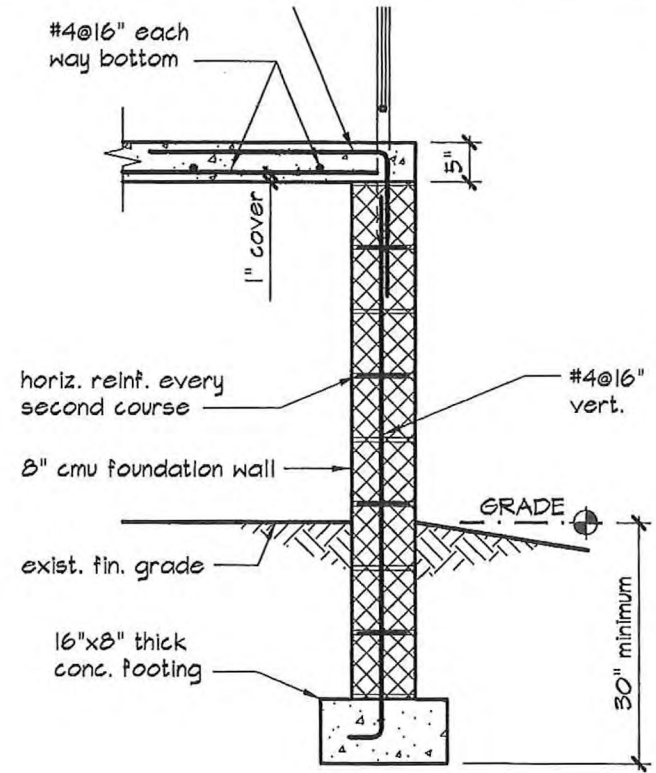
- 1.) Footings shall bear on undisturbed soil at a minimum depth of 30-inches below finish grade.
- 2.) minimum compressive strength of concrete shall be 2500 psi.

**SAMPLE**



**CROSS SECTION - LANDING**

SCALE: 1/2"=1'-0"



**OPTIONAL CMU FOUNDATION WALL**

#4@16" vert. & horiz.

GRADE

30" minimum

**WARNING AND DISCLAIMER**

This drawing is intended only to be illustrative of the minimum requirements of applicable County ordinances. It is not a blue print, nor a set of plans and specifications. PRINCE GEORGE'S COUNTY, MARYLAND DOES NOT WARRANT OR GUARANTEE IN ANY MANNER OR TO ANY EXTENT THE SUFFICIENCY OF THIS DRAWING. Persons to whom this drawing is distributed should not rely on it as an acceptable plan or blue print for any structure. PRINCE GEORGE'S COUNTY, MARYLAND DISCLAIMS ANY AND ALL LIABILITY FOR DAMAGES OR INJURIES, DIRECT OR CONSEQUENTIAL, ARISING OUT OF THE USE OF THIS DRAWING.



Prince George's County Government  
Dept. of Permitting, Inspections and Enforcement

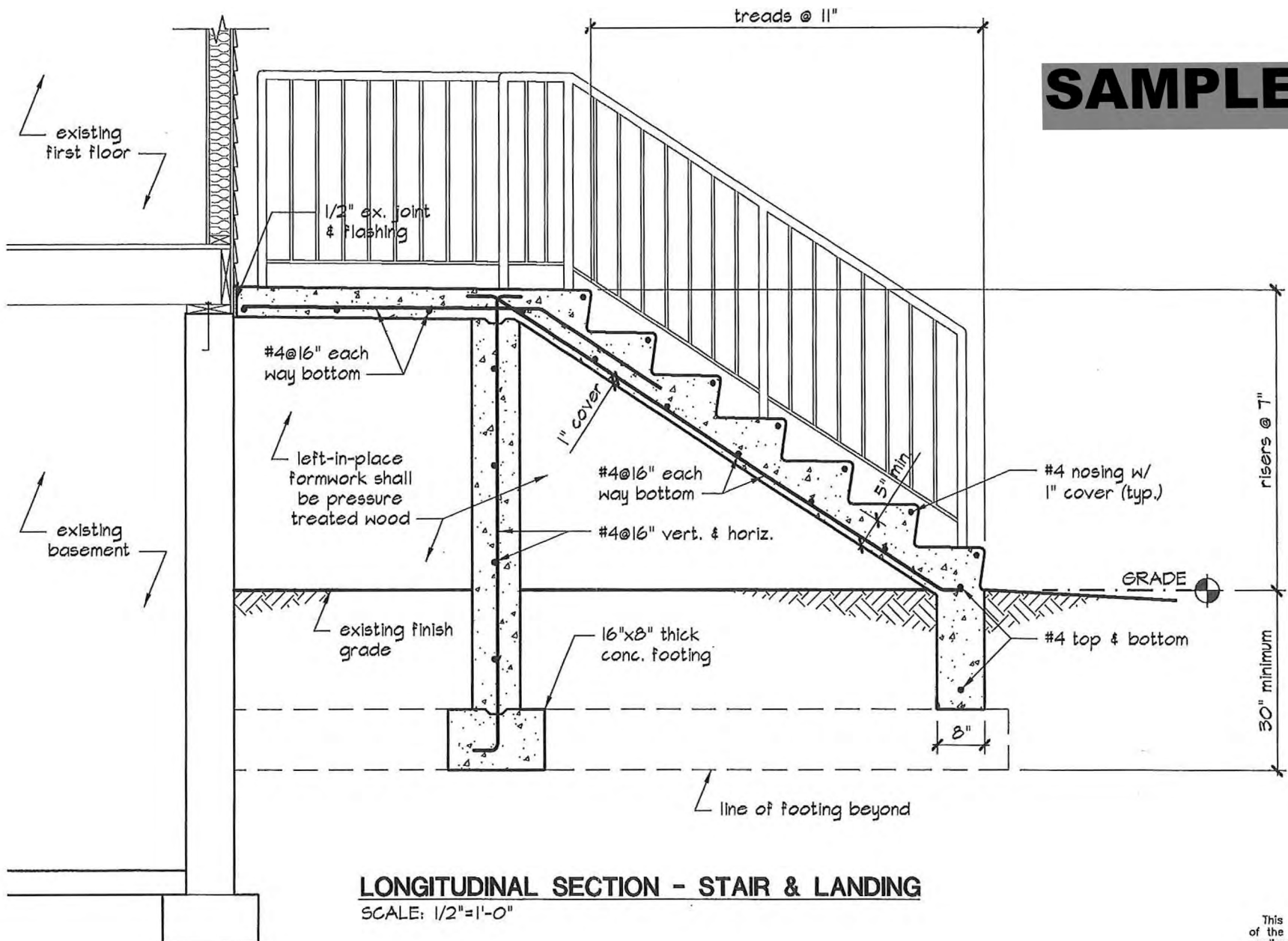


**EXTERIOR STAIRWAY  
LANDING CROSS SECTION**

Drawing No.

**D-009**

Sheet 3 of 4



**LONGITUDINAL SECTION - STAIR & LANDING**  
 SCALE: 1/2"=1'-0"

**WARNING AND DISCLAIMER**

This drawing is intended only to be illustrative of the minimum requirements of applicable County ordinances. It is not a blue print, nor a set of plans and specifications. PRINCE GEORGE'S COUNTY, MARYLAND DOES NOT WARRANT OR GUARANTEE IN ANY MANNER OR TO ANY EXTENT THE SUFFICIENCY OF THIS DRAWING. Persons to whom this drawing is distributed should not rely on it as an acceptable plan or blue print for any structure. PRINCE GEORGE'S COUNTY, MARYLAND DISCLAIMS ANY AND ALL LIABILITY FOR DAMAGES OR INJURIES, DIRECT OR CONSEQUENTIAL, ARISING OUT OF THE USE OF THIS DRAWING.

**EXTERIOR STAIRWAY  
 LONGITUDINAL SECTION**

Drawing No.

**D-010**

Sheet 4 Of 4