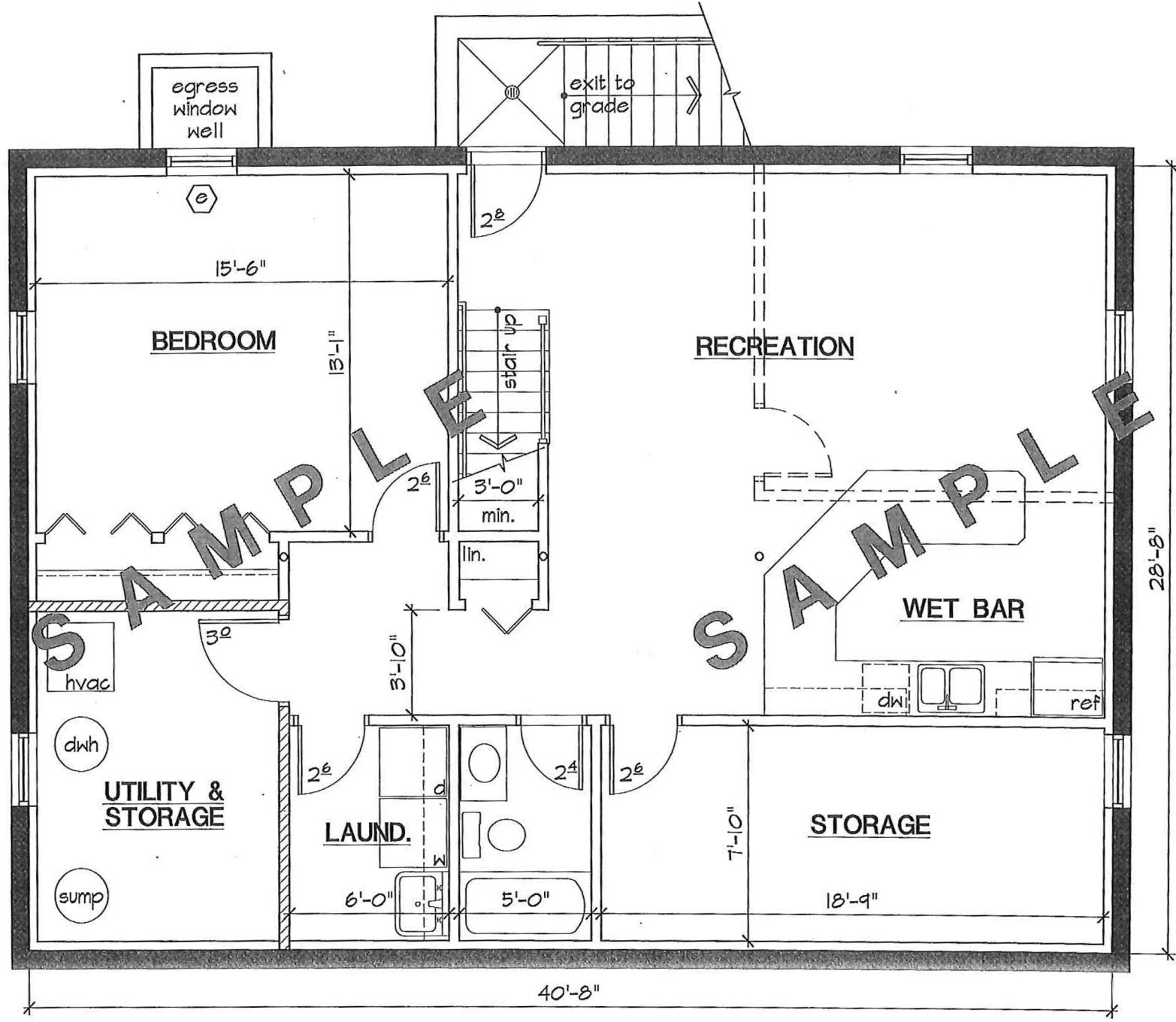




**FINISHED BASEMENT  
SAMPLE FLOOR PLAN**



**LEGEND**

- existing wall to be removed
- existing door to be removed
- proposed wall - 2x4 studs @ 16" o/c w/ 1/2" drywall each side
- proposed door w/ size shown
- remove existing plaster/drywall and replace w/ 1/2" drywall on existing wall framing
- existing wall to remain
- emergency escape and rescue opening (egress window) - refer to window schedule

**WINDOW SCHEDULE**

window type	minimum size
double hung	36"W x 60"h
single hung	36"W x 60"h
casement	30"W x 42"h
sliding	48"W x 48"h

**WARNING AND DISCLAIMER**

This drawing is intended only to be illustrative of the minimum requirements of applicable County ordinances. It is not a blue print, nor a set of plans and specifications. PRINCE GEORGE'S COUNTY, MARYLAND DOES NOT WARRANT OR GUARANTEE IN ANY MANNER OR TO ANY EXTENT THE SUFFICIENCY OF THIS DRAWING. Persons to whom this drawing is distributed should not rely on it as an acceptable plan or blue print for any structure. PRINCE GEORGE'S COUNTY, MARYLAND DISCLAIMS ANY AND ALL LIABILITY FOR DAMAGES OR INJURIES, DIRECT OR CONSEQUENTIAL, ARISING OUT OF THE USE OF THIS DRAWING.

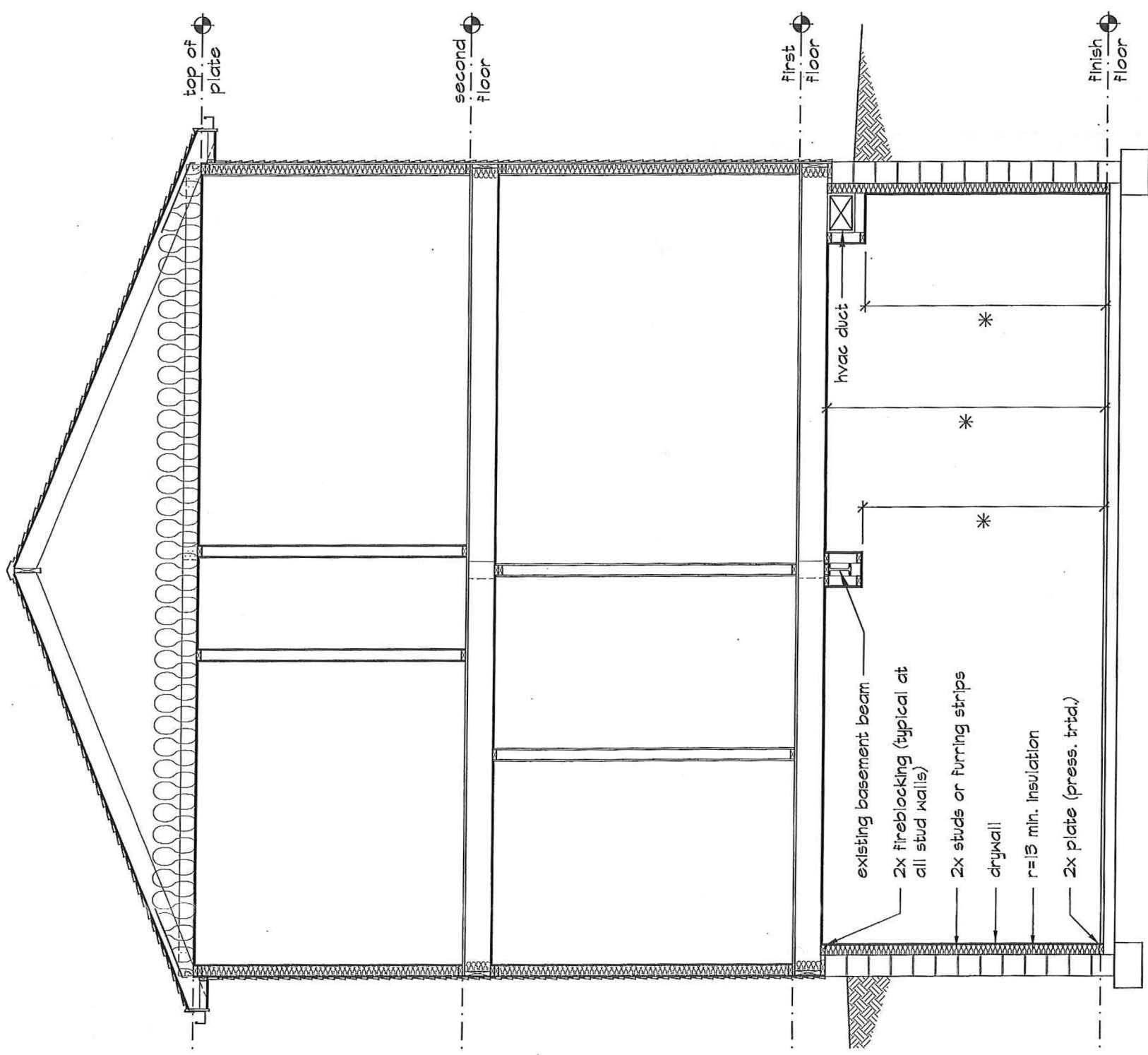
**SAMPLE FLOOR PLAN - FINISHED BASEMENT**

SCALE: 1/4" = 1'-0"

**SAMPLE**

Drawing No.

**D-013**



\* finish ceiling height and heights to all dropped beams and bulkheads must be dimensioned

**SAMPLE**

Basement Finishing Notes:

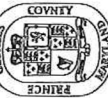
- 1.) Separate Electrical and Plumbing Permits must be obtained.
- 2.) lumber in contact with below grade masonry or concrete must be pressure treated.

**WARNING AND DISCLAIMER**  
 This drawing is intended only to be illustrative of the minimum requirements of applicable County ordinances. It is not a guarantee of performance or warranty. PRINCE GEORGE'S COUNTY, MARYLAND DOES NOT WARRANT OR GUARANTEE IN ANY MANNER OR TO ANY EXTENT THE SUFFICIENCY OF THIS DRAWING. Persons to whom this drawing is distributed should not rely on it as an acceptable plan or blue print for any structure. PRINCE GEORGE'S COUNTY, MARYLAND DISCLAIMS ANY AND ALL LIABILITY FOR DAMAGES OR INJURIES, DIRECT OR CONSEQUENTIAL, ARISING OUT OF THE USE OF THIS DRAWING.

Drawing No.

**D-014**

Sheet 1 Of 1



**FINISHED BASEMENT  
BUILDING SECTION**

Prince George's County Government  
 Dept. of Permitting, Inspections and Enforcement