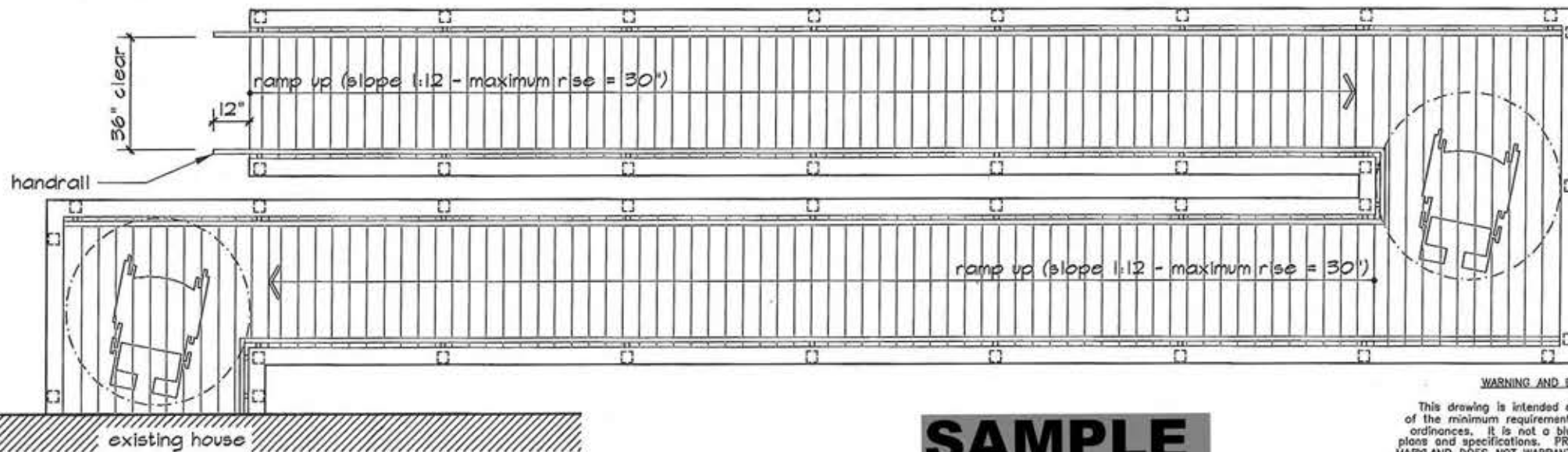


**FRAMING / FOUNDATION PLAN**

SCALE: 1/4"=1'-0"



**FLOOR PLAN**

SCALE: 1/4"=1'-0"

**SAMPLE**

**WARNING AND DISCLAIMER**

This drawing is intended only to be illustrative of the minimum requirements of applicable County ordinances. It is not a blue print, nor a set of plans and specifications. PRINCE GEORGE'S COUNTY, MARYLAND DOES NOT WARRANT OR GUARANTEE IN ANY MANNER OR TO ANY EXTENT THE SUFFICIENCY OF THIS DRAWING. Persons to whom this drawing is distributed should not rely on it as an acceptable plan or blue print for any structure. PRINCE GEORGE'S COUNTY, MARYLAND DISCLAIMS ANY AND ALL LIABILITY FOR DAMAGES OR INJURIES, DIRECT OR CONSEQUENTIAL, ARISING OUT OF THE USE OF THIS DRAWING.



**RESIDENTIAL HC RAMP  
FRAMING/FOUNDATION PLAN  
AND FLOOR PLAN**

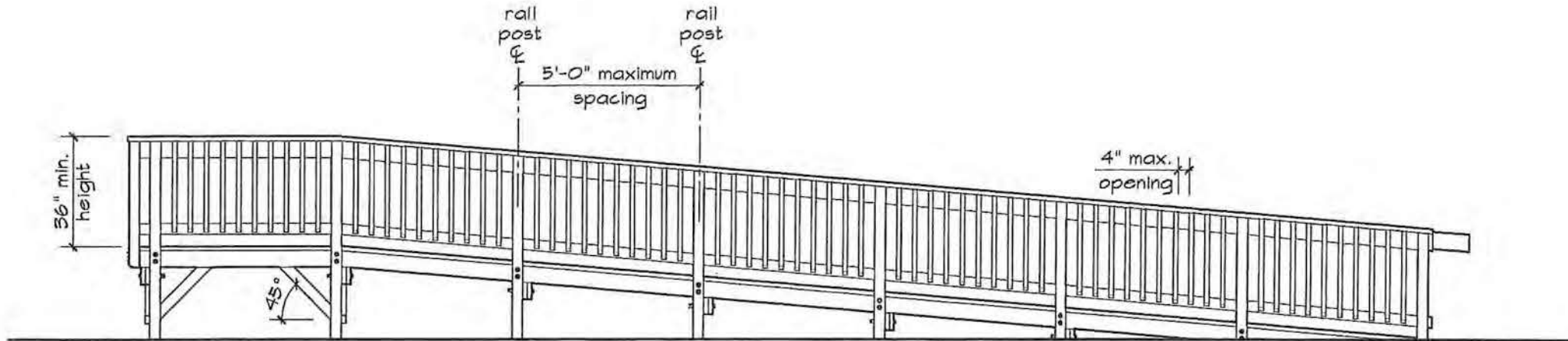
Drawing No.

**D-012**

Sheet 1 Of 4

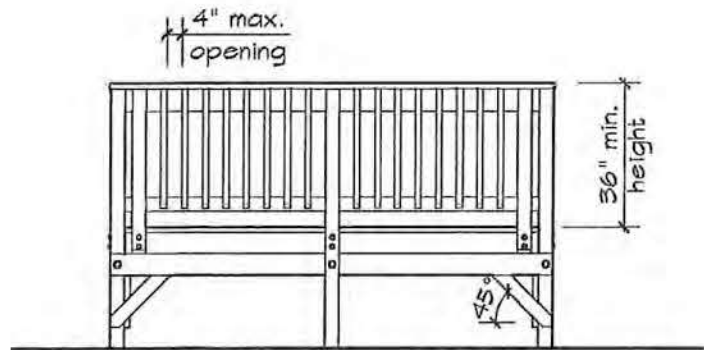


Prince George's County Government  
Dept. of Permitting, Inspections and Enforcement



**RAMP & LANDING SIDE ELEVATION**

SCALE: 1/4"=1'-0"



**LANDING ELEVATION**

SCALE: 1/4"=1'-0"

Notes

- 1.) all lumber shall be pressure treated.
- 2.) all connectors, anchors and fasteners shall be either Zmax or post batch hot-dip galvanized steel.
- 3.) do not use standard carbon-steel or aluminum products in direct contact with pressure treated wood.

**SAMPLE**

WARNING AND DISCLAIMER

This drawing is intended only to be illustrative of the minimum requirements of applicable County ordinances. It is not a blue print, nor a set of plans and specifications. PRINCE GEORGE'S COUNTY, MARYLAND DOES NOT WARRANT OR GUARANTEE IN ANY MANNER OR TO ANY EXTENT THE SUFFICIENCY OF THIS DRAWING. Persons to whom this drawing is distributed should not rely on it as an acceptable plan or blue print for any structure. PRINCE GEORGE'S COUNTY, MARYLAND DISCLAIMS ANY AND ALL LIABILITY FOR DAMAGES OR INJURIES, DIRECT OR CONSEQUENTIAL, ARISING OUT OF THE USE OF THIS DRAWING.



Prince George's County Government  
Dept. of Permitting, Inspections and Enforcement

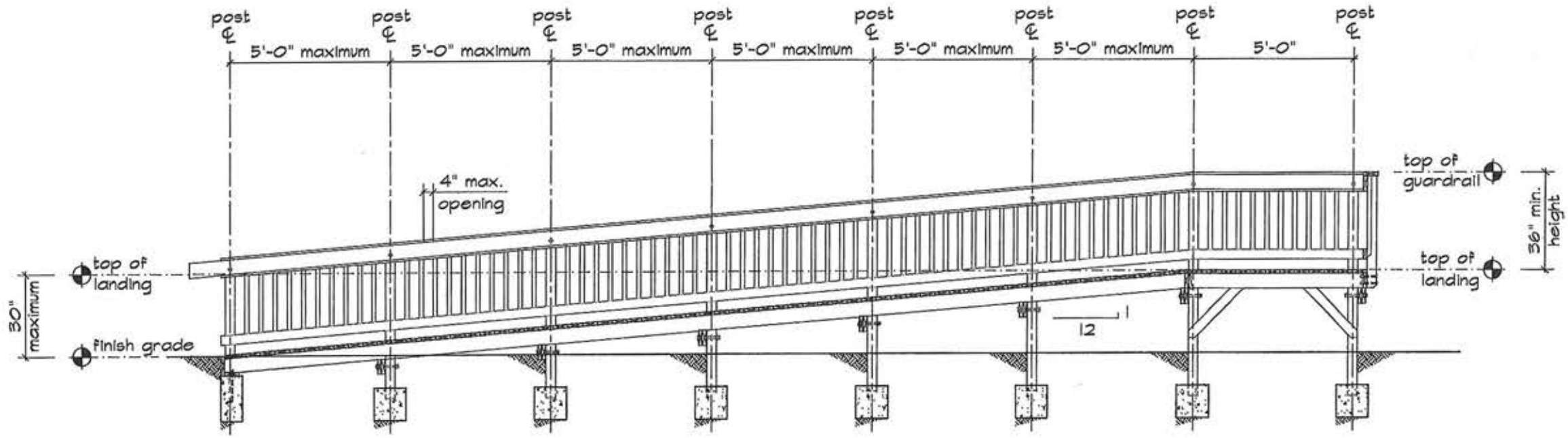


**RESIDENTIAL HC RAMP  
ELEVATIONS**

Drawing No.

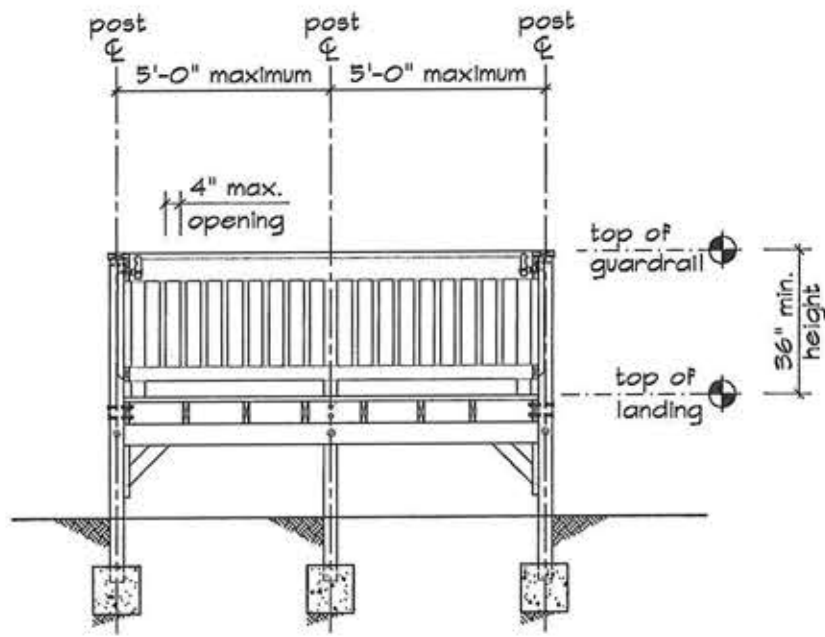
**D-013**

Sheet 2 Of 4



**RAMP & LANDING LONGITUDINAL SECTION**

SCALE: 1/4"=1'-0"



**LANDING CROSS SECTION**

SCALE: 1/4"=1'-0"

**Fastener & Hanger Note:**  
 New methods of pressure treating wood require heavier zinc coatings on plate and gauge steel connectors and fasteners. All plate and gauge steel connectors and fasteners shall be either Zmax or post batch hot-dip galvanized wherever they contact pressure treated wood.

**SAMPLE**

**WARNING AND DISCLAIMER**

This drawing is intended only to be illustrative of the minimum requirements of applicable County ordinances. It is not a blue print, nor a set of plans and specifications. PRINCE GEORGE'S COUNTY, MARYLAND DOES NOT WARRANT OR GUARANTEE IN ANY MANNER OR TO ANY EXTENT THE SUFFICIENCY OF THIS DRAWING. Persons to whom this drawing is distributed should not rely on it as an acceptable plan or blue print for any structure. PRINCE GEORGE'S COUNTY, MARYLAND DISCLAIMS ANY AND ALL LIABILITY FOR DAMAGES OR INJURES, DIRECT OR CONSEQUENTIAL, ARISING OUT OF THE USE OF THIS DRAWING.



Prince George's County Government  
 Dept. of Permitting, Inspections and Enforcement

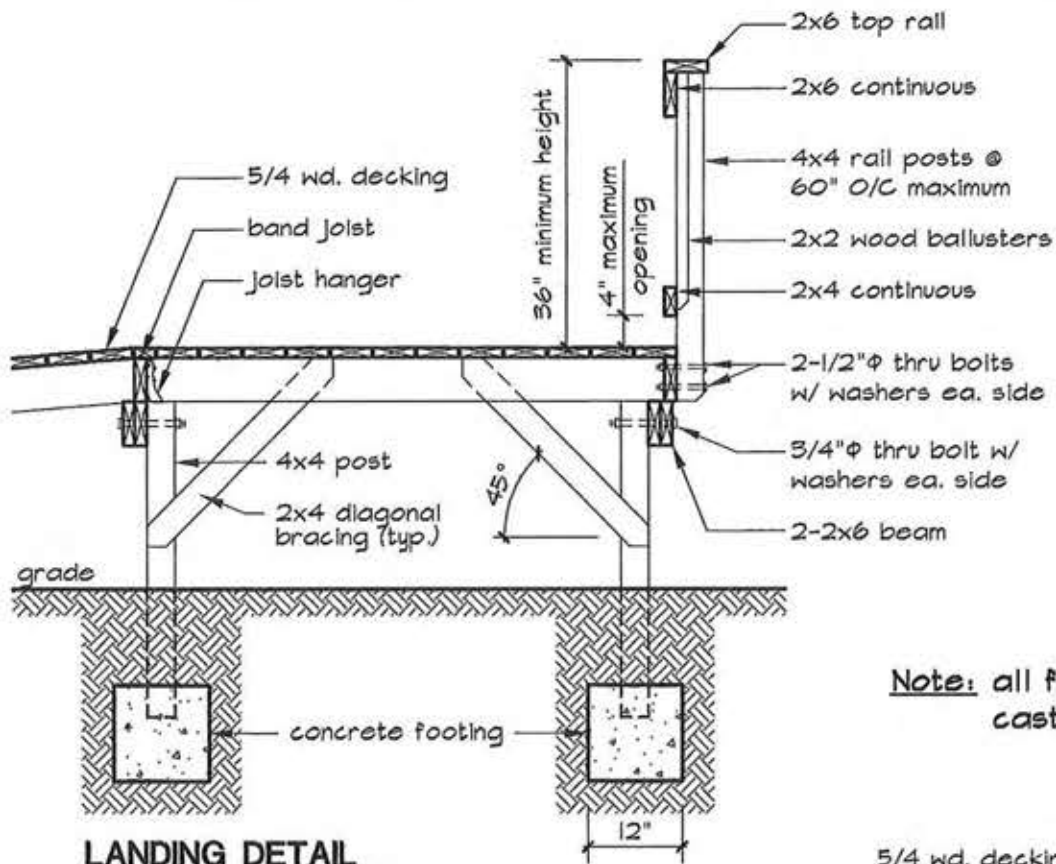


**RESIDENTIAL HC RAMP  
 SECTIONS**

Drawing No.

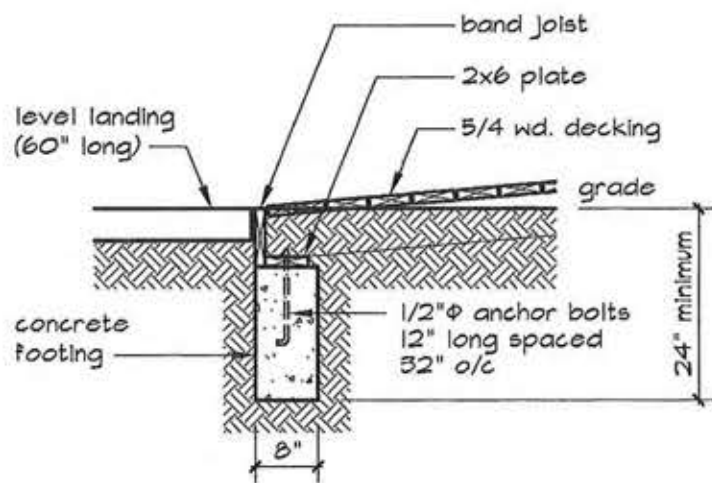
**D-014**

Sheet 3 of 4



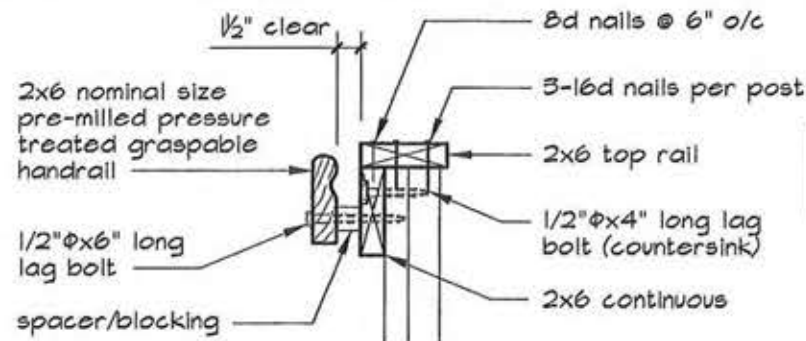
**LANDING DETAIL**

SCALE: 1/2"=1'-0"



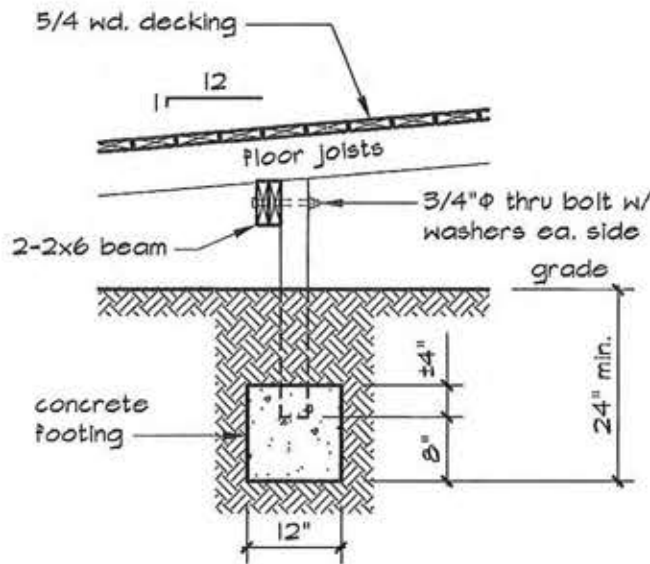
**RAMP @ GRADE DETAIL**

SCALE: 1/2"=1'-0"



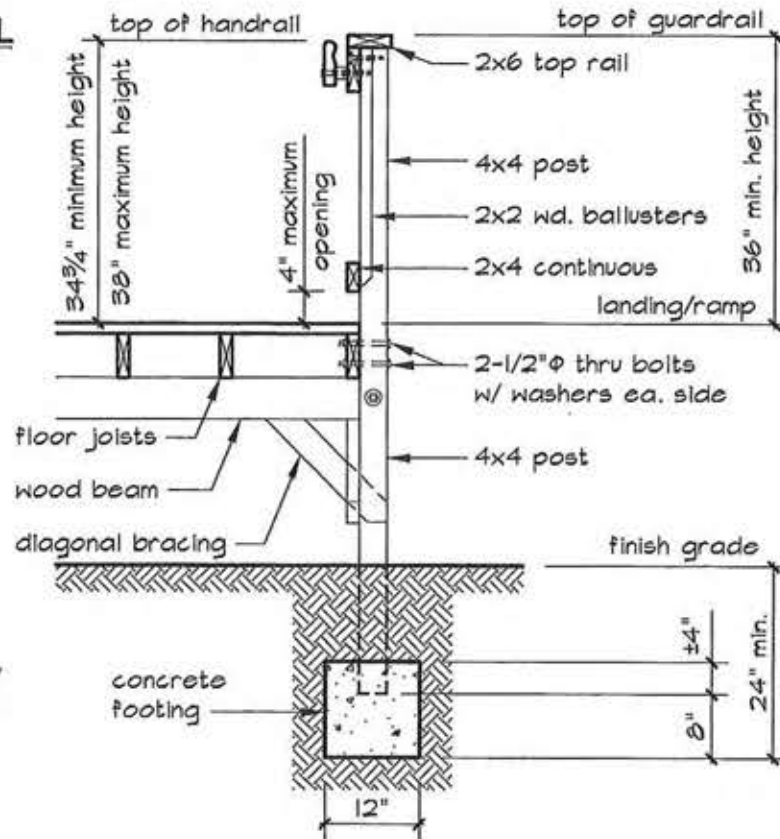
**HANDRAIL DETAIL**

**Note:** all footings shall be cast-in-place concrete



**POST / BEAM DETAIL**

SCALE: 1/2"=1'-0"



**RAMP / LANDING / HANDRAIL DETAIL**

SCALE: 1/2"=1'-0"

WARNING AND DISCLAIMER

This drawing is intended only to be illustrative of the minimum requirements of applicable County ordinances. It is not a blue print, nor a set of plans and specifications. PRINCE GEORGE'S COUNTY, MARYLAND DOES NOT WARRANT OR GUARANTEE IN ANY MANNER OR TO ANY EXTENT THE SUFFICIENCY OF THIS DRAWING. Persons to whom this drawing is distributed should not rely on it as an acceptable plan or blue print for any structure. PRINCE GEORGE'S COUNTY, MARYLAND DISCLAIMS ANY AND ALL LIABILITY FOR DAMAGES OR INJURIES, DIRECT OR CONSEQUENTIAL, ARISING OUT OF THE USE OF THIS DRAWING.

**SAMPLE**



Prince George's County Government  
Dept. of Permitting, Inspections and Enforcement



**RESIDENTIAL HC RAMP  
DETAILS**

Drawing No.

**D-015**

Sheet 4 Of 4